

# ACTIVEOPS

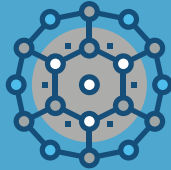
Manage Differently

BEFORE | WORKWARE+

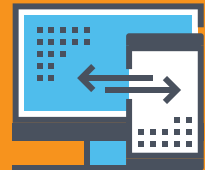


AFTER | WORKWARE+

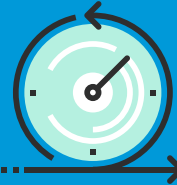
No single enterprise view of work in, done and outstanding



Real-time view of all work in the enterprise



Work expands to fill the time available - productivity varies with workloads



You work consistently at a stretching level of **PRODUCTIVITY** releasing capacity to solve your business issues

YOU ONLY KNOW YOU HAVE AN OPERATIONAL ISSUE WHEN IT'S TOO LATE



See in real-time how you are comparing against your plan. You can sleep at night confident that you're in

**CONTROL**



Operations leaders have learnt their trade **ON THE JOB**



Operations leaders are **TRAINED AND ACCREDITED** in their profession

Each department does things in their own way



A standard operating rhythm across all departments with consistent metrics



Hard to assess the **PERFORMANCE** of operations leaders as every department is different

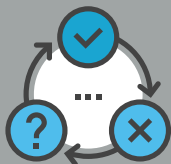


**FULL VISIBILITY,** regardless of work location

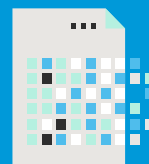
No idea how **YOU COMPARE** to other companies



**INDUSTRY BENCHMARKS** against which to compare your operational performance



Change programmes **PROMISE LOTS** but seem to deliver less



The impact of change can be **ACCURATELY ASSESSED** and the benefits realised. A full audit trail is maintained